

Light Valley Solar

Location plans

Document Reference: EN0110012/APP/LVS/02.01

February 2026

Planning Inspectorate Reference: EN0110012
APFP Regulation: 5(2)(o)



Light Valley
Solar

Infrastructure Planning

Planning Act 2008

The Infrastructure Planning (Applications: Prescribed Forms and Procedure) Regulations 2009

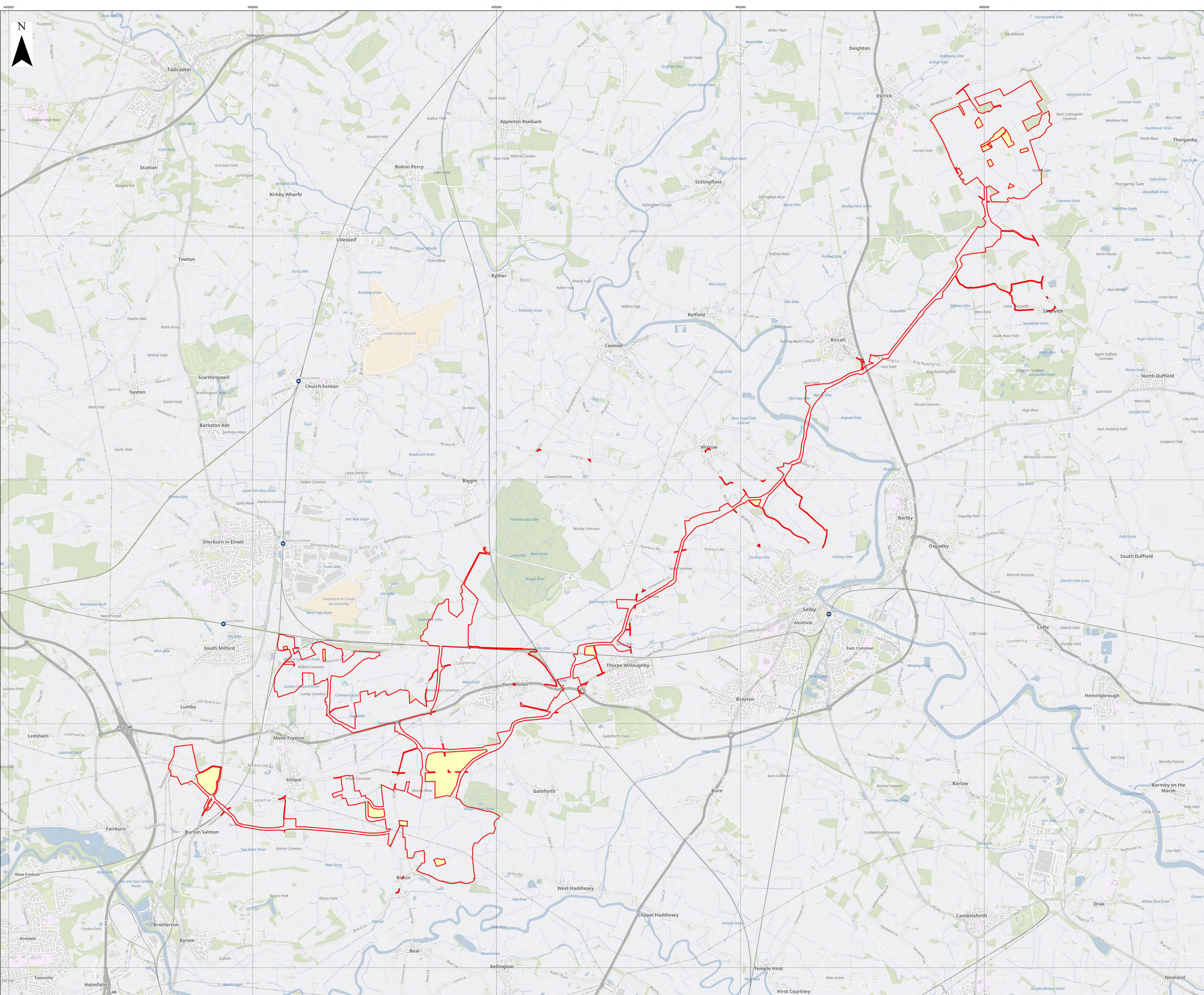
Light Valley Solar

DCO Submission

Location plans

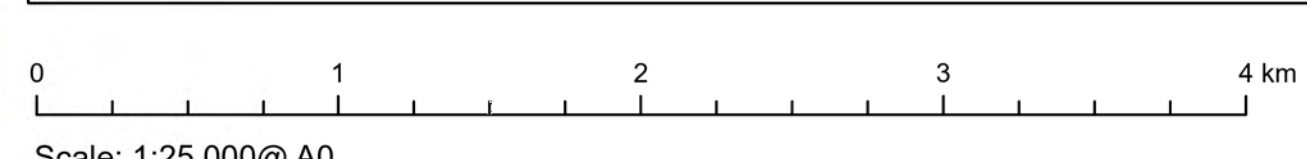
Regulation Reference	APFP Regulation 5(2)(o)
Planning Inspectorate Case Reference	EN0110012
Application Document Reference	EN0110012/APP/02.01
Author	Light Valley Solar Limited

Version	Date	Status of Version
1.0	February 2026	DCO Submission



Key
 Order Limits
 Land not included within Order Limits

Layers: Lanpro, 2025, IGR, 2025
 Base map: Reproduced from Ordnance Survey digital map data © Crown copyright 2025. All rights reserved. License number 0100031673
 Contains OS data © Crown Copyright and database right 2025. Contains data from OS Zoomstack



APFP Regulation: 5(2)(g)	Application Doc No.: EN0110012/APPLVS02.01
Ref: P6045_LPR_ZZ_XX_DR_Z_DCO_0087	Date: 06/02/2026
Drawn by: AZ	Checked by: BH

Location Plan